

1995 Boys' Sweet Sixteen Action

first round

FRANKLIN COUNTY

VS.

**BRECKINRIDGE
COUNTY**

March 15, 1995

**Rupp Arena
Lexington, Kentucky**

OFFICIAL STATISTICS BOOKLET

OFFICIAL NFSA BASKETBALL BOX SCORE: *** FINAL ***
 Date: 03-15-95 Site:BOY'S SWEET 16, LEXINGTON

VISITORS (Last Name, First)

NO.	BRECKINRIDGE COUNTY	Tot FG		3-POINT		FT	FTA	Rebounds			PF	TP	A	TO	BLK	S	TIME
		FG	FGA	FG	FGA			OFF	DEF	TOT							
34	WHITWORTH, JARED	2	5	0	1	0	0	1	1	2	1	4	0	2	0	0	32:00
42	SILLS, JAY	10	16	0	1	6	6	3	4	7	4	26	0	1	0	2	30:56
32	MATTINGLY, ADAM	5	8	0	1	2	2	1	2	3	2	12	0	2	1	1	32:00
12	PAYNE, BRADLEY	1	3	1	2	0	0	0	0	0	5	3	3	3	0	0	24:02
20	CRITCHELOW, PAT	3	5	0	0	11	14	0	6	6	2	17	7	2	0	2	32:00
40	MATTINGLY, MATT	0	1	0	0	0	1	0	3	3	0	0	0	1	0	0	8:20
41	WILLIAMS, CARL	0	0	0	0	0	0	0	0	0	0	0	0	0	0	0	0:42
TEAM REBOUNDS (INCLUDED IN TOTALS)																	
TOTALS		21	38	1	5	19	23	7	16	23	14	62	10	12	1	5	160
Percentages:		Game---		FG		21/38	55.3%	3-PT.		1/5	20.0%	FT		19/23	82.6%		
Period 1						8/14	57.1%			0/1	0.0%			0/0	0.0%		
Period 2						3/9	33.3%			0/2	0.0%			5/6	83.3%		
Period 3						5/9	55.6%			1/2	50.0%			2/2	100.0%		
Period 4						5/6	83.3%			0/0	0.0%			12/15	80.0%		

HOME (Last Name, First)

NO.	FRANKLIN COUNTY	Tot FG		3-POINT		FT	FTA	Rebounds			PF	TP	A	TO	BLK	S	TIME
		FG	FGA	FG	FGA			OFF	DEF	TOT							
00	MILLER, SHANE	2	3	2	3	0	0	0	1	1	2	6	1	2	0	1	25:43
33	ROBINSON, RONI	10	20	2	6	3	4	2	5	7	5	25	0	2	2	2	31:54
50	EVANS, DAVID	4	7	0	1	4	6	4	4	8	4	12	3	3	1	1	21:46
10	ROBINSON, DALE	0	2	0	1	0	0	0	1	1	4	0	7	4	0	2	30:31
15	HOEHNER, SAM	4	7	3	6	0	0	0	1	1	5	11	1	2	0	2	31:44
13	McCLAIN, JOEY	1	2	0	1	0	0	0	0	0	0	2	0	0	0	0	8:02
34	RICE, DAVID	0	0	0	0	0	0	0	0	0	1	0	1	0	1	0	10:14
22	MEFFORD, BRENT	0	0	0	0	0	0	0	1	1	0	0	0	0	0	0	0:6
TEAM REBOUNDS (INCLUDED IN TOTALS)																	
TOTALS		21	41	7	18	7	10	6	14	20	21	56	13	13	4	8	160
Percentages:		Game---		FG		21/41	51.2%	3-PT.		7/18	38.9%	FT		7/10	70.0%		
Period 1						3/6	50.0%			1/1	100.0%			3/4	75.0%		
Period 2						4/9	44.4%			2/5	40.0%			0/0	0.0%		
Period 3						6/11	54.5%			2/5	40.0%			0/1	0.0%		
Period 4						8/15	53.3%			2/7	28.6%			4/5	80.0%		

OFFICIALS: Anthony Gray, Lyman Brown, Roger Cross-Alt
 Technicals: None

Cross-Alt SCORE BY PERIODS

BRECKINRIDGE COUNTY	16	11	13	22	=	62
FRANKLIN COUNTY	10	10	14	22	=	56

Attendance: 17,125

POINTS OFF TURNOVERS		SECOND CHANCE POINTS	
BRECKINRIDGE COUNTY	10	FRANKLIN COUNTY	6
Produced by the KHSAA SWEET 16 Stat Crew with FINAL III		a Product of Stone Consulting (606)273-3941	

BRECKINRIDGE COUNTY "FIGHTING TIGERS" vs FRANKLIN COUNTY "FLYERS"
1st Half Play by Play

PAGE : 1

Tip off at 2:30 P.M. on 03/15/95 at BOY'S SWEET 16, LEXINGTON
Produced by the KHSAA SWEET 16 Stat. Crew with FINAL III
Final III is a product of STONE CONSULTING SERVICE (606)273-3941

Player	Team	FRANKLIN COUNTY
MILLER, SHANE		ROBINSON, RONI , 2 Free Throws missed 1st made 2nd
1-2	50.0%	1-2 50.0%
3-4	75.0%	3-4 75.0%
1-1	100%	1-2 50.0%
1-1	100%	2-3 66.6%
2-2	100%	3-4 75.0%

REB: 3 A: 2 BLK: 1 TO: 5 PF: 1
S: 2 FT: 3-4 75.0% FG: 3-6 50.0%

Time	Score	BRECKINRIDGE COUNTY	Player	Team
1 7:52	0-2*	WHITWORTH, JARED, SILLS, JAY, MATTINGLY, ADAM, PAYNE, BRADLEY, CRITCHELOW, PAT	1-1	100%
1 6:19		Ball to FIGHTING TIGERS	1	1
1 6:19	*1-2	4 ft Lane Jump shot by SILLS, JAY	2-3	66.6%
1 4:58	1-4*	Foul on PAYNE, BRADLEY	1	2
1 4:44		2 ft Lane Follow by SILLS, JAY	1-3	33.3%
1 4:44		Foul on SILLS, JAY	1-3	33.3%
1 4:44	*3-4	4 ft Lane Jump shot by MATTINGLY, ADAM	2-4	50.0%
1 4:38	3-6*	3 ft Lane Driving by MATTINGLY, ADAM	1	1
1 4:13	*5-6	Assist by CRITCHELOW, PAT	3-4	75.0%
1 3:39	*7-6	4 ft Lane Jump shot by SILLS, JAY	2	2
1 3:29	7-8*	Assist by CRITCHELOW, PAT	1-2	50.0%
1 3:15		14 ft Lane Jump shot by CRITCHELOW, PAT	4-5	80.0%
1 2:31		6 ft Lane Jump shot by SILLS, JAY	5-6	83.3%
1 2:24	7-10*	8 ft Left Angle Jump shot by SILLS, JAY	1	3
1 2:05	*10-10	Assist by PAYNE, BRADLEY		
1 1:35	10-12*			
1 1:06	10-14*			
1 0:50	10-16*			
1 0:48				
1 0:00		Foul on PAYNE, BRADLEY	2	3
1 0:00		Sub In: MATTINGLY, MATT Out: PAYNE, BRADLEY		

No. 1 FRANKLIN COUNTY TIME - O U T
REB: 6 A: 3 BLK: 1 TO: 3 PF: 2
S: 1 FT: 0-0 00.0% FG: 8-14 57.1%

Player	Team	FRANKLIN COUNTY
MILLER, SHANE, ROBINSON, RONI, EVANS, DAVID, ROBINSON, DALE, HOEHNER, SAM		
1-1	100%	4-7 57.1%
1	2	16 ft Right Side Jump shot by HOEHNER, SAM Foul on MILLER, SHANE Sub In: McCLAIN, JOEY Out: MILLER, SHANE
1	3	Foul on ROBINSON, DALE
3-5	60.0%	5-9 55.5%
1	3	3 pt 22 ft Right Base Line Jump shot by ROBINSON, RONI Assist by HOEHNER, SAM
2	4	Foul on EVANS, DAVID Sub In: RICE, DAVID Out: EVANS, DAVID
2-2	100%	6-10 60.0%
2	4	3 pt 23 ft Right Side Jump shot by HOEHNER, SAM Assist by ROBINSON, DALE
1	5	Foul on ROBINSON, RONI Sub In: MILLER, SHANE Out: McCLAIN, JOEY Sub In: EVANS, DAVID Out: RICE, DAVID
3	6	Player Control Foul on EVANS, DAVID Sub In: RICE, DAVID Out: EVANS, DAVID
4-7	57.1%	7-13 53.8%
1	7	Driving Layup by ROBINSON, RONI Foul on RICE, DAVID

Time	Score	BRECKINRIDGE COUNTY	Player	Team
WHITWORTH, JARED, SILLS, JAY, MATTINGLY, ADAM, MATTINGLY, MATT, CRITCHELOW, PAT Ball to FIGHTING TIGERS				
2	7:56	*12-16		
2	7:28			
2	7:28			
2	7:28	12-18*	MATTINGLY, ADAM, 2 Free Throws made both	2-2 100% 2-2 100%
2	6:39			
2	6:39		Sub In: PAYNE, BRADLEY Out: MATTINGLY, MATT	
2	6:14	*15-18		
2	6:00			
2	6:00			
2	6:00	15-20*	3 ft Lane Jump shot by MATTINGLY, ADAM Assist by PAYNE, BRADLEY	3-5 60.0% 9-17 52.9% 2 4
2	5:04	*18-20		
2	4:40			
2	4:40	18-22*	SILLS, JAY, 2 Free Throws made both	2-2 100% 4-4 100%
2	3:48			
2	3:48			
2	2:40			
2	2:40			
2	1:54	18-24*	2 ft Lane Driving by SILLS, JAY Foul on CRITCHELOW, PAT	6-9 66.6% 10-21 47.6% 1 4
2	1:39			
2	1:19	*20-24		
2	1:05	20-26*	Jump shot Layup by SILLS, JAY Assist by CRITCHELOW, PAT	7-10 70.0% 11-22 50.0% 3 5
2	0:47			
2	0:47			
2	0:47	20-27*	CRITCHELOW, PAT, 1 & Bonus made 1st missed 2nd	1-2 50.0% 5-6 83.3% 2 5
2	0:42		Foul on SILLS, JAY	
2	0:42		Sub In: WILLIAMS, CARL Out: SILLS, JAY	

Official Boxscore * OFFICIAL FIRST HALF *

Date: 03-15-95 Site:BOY'S SWEET 16, LEXINGTON

VISITORS (Last Name, First)

NO.	BRECKINRIDGE COUNTY	Tot FG		3-POINT		FT	FTA	Rebounds			PF	TP	A	TO	BLK	S	TIME
		FG	FGA	FG	FGA			OFF	DEF	TOT							
34	WHITWORTH, JARED	0	3	0	1	0	0	0	0	0	0	0	0	0	0	16:00	
42	SILLS, JAY	7	10	0	1	2	2	2	1	3	2	16	0	1	0	15:18	
32	MATTINGLY, ADAM	3	5	0	1	2	2	1	1	2	0	8	0	1	1	16:00	
12	PAYNE, BRADLEY	0	1	0	0	0	0	0	0	0	2	0	2	1	0	13:52	
20	CRITCHELOW, PAT	1	3	0	0	1	2	0	4	4	1	3	3	0	0	15:26	
40	MATTINGLY, MATT	0	1	0	0	0	0	0	1	1	0	0	0	0	0	3:08	
41	WILLIAMS, CARL	0	0	0	0	0	0	0	0	0	0	0	0	0	0	0:42	
TEAM REBOUNDS (INCLUDED IN TOTALS)								2	7	2							
TOTALS		11	23	0	3	5	6	5	7	12	5	27	5	4	1	2	80
TOTAL FG 1st HALF		8/14	57.1%	2nd HALF		3/9	33.3%	GAME		11/23	47.8%	DEADBALL					
3-POINT FG 1st HALF		0/1	0.0%	2nd HALF		0/2	0.0%	GAME		0/3	0.0%	REBOUNDS		0			
FREE THROWS 1st HALF		0/0	0.0%	2nd HALF		5/6	83.3%	GAME		5/6	83.3%						

HOME (Last Name, First)

NO.	FRANKLIN COUNTY	Tot FG		3-POINT		FT	FTA	Rebounds			PF	TP	A	TO	BLK	S	TIME
		FG	FGA	FG	FGA			OFF	DEF	TOT							
00	MILLER, SHANE	0	0	0	0	0	0	0	1	1	1	0	0	1	0	0	12:20
33	ROBINSON, RONI	4	9	2	3	3	4	1	3	4	1	13	0	2	2	0	16:00
50	EVANS, DAVID	0	1	0	0	0	0	0	2	2	3	0	1	3	0	0	11:08
10	ROBINSON, DALE	0	1	0	1	0	0	0	1	1	1	0	2	2	0	1	14:31
15	HOEHNER, SAM	2	2	1	1	0	0	0	1	1	0	5	1	0	0	0	16:00
13	McCLAIN, JOEY	1	2	0	1	0	0	0	0	0	0	2	0	0	0	0	5:09
34	RYCE, DAVID	0	0	0	0	0	0	0	0	0	1	0	0	0	1	0	4:52
TEAM REBOUNDS (INCLUDED IN TOTALS)								1	8	9	7	20	4	8	3	3	80
TOTALS		7	15	3	6	3	4	1	8	9	7	20	4	8	3	3	80
TOTAL FG 1st HALF		3/6	50.0%	2nd HALF		4/9	44.4%	GAME		7/15	46.7%	DEADBALL					
3-POINT FG 1st HALF		1/1	100.0%	2nd HALF		2/5	40.0%	GAME		3/6	50.0%	Rebounds		1			
FREE THROWS 1st HALF		3/4	75.0%	2nd HALF		0/0	0.0%	GAME		3/4	75.0%						

OFFICIALS: Anthony Gray, Lyman Brown, Roger Cross-Alt
 Technicals: None

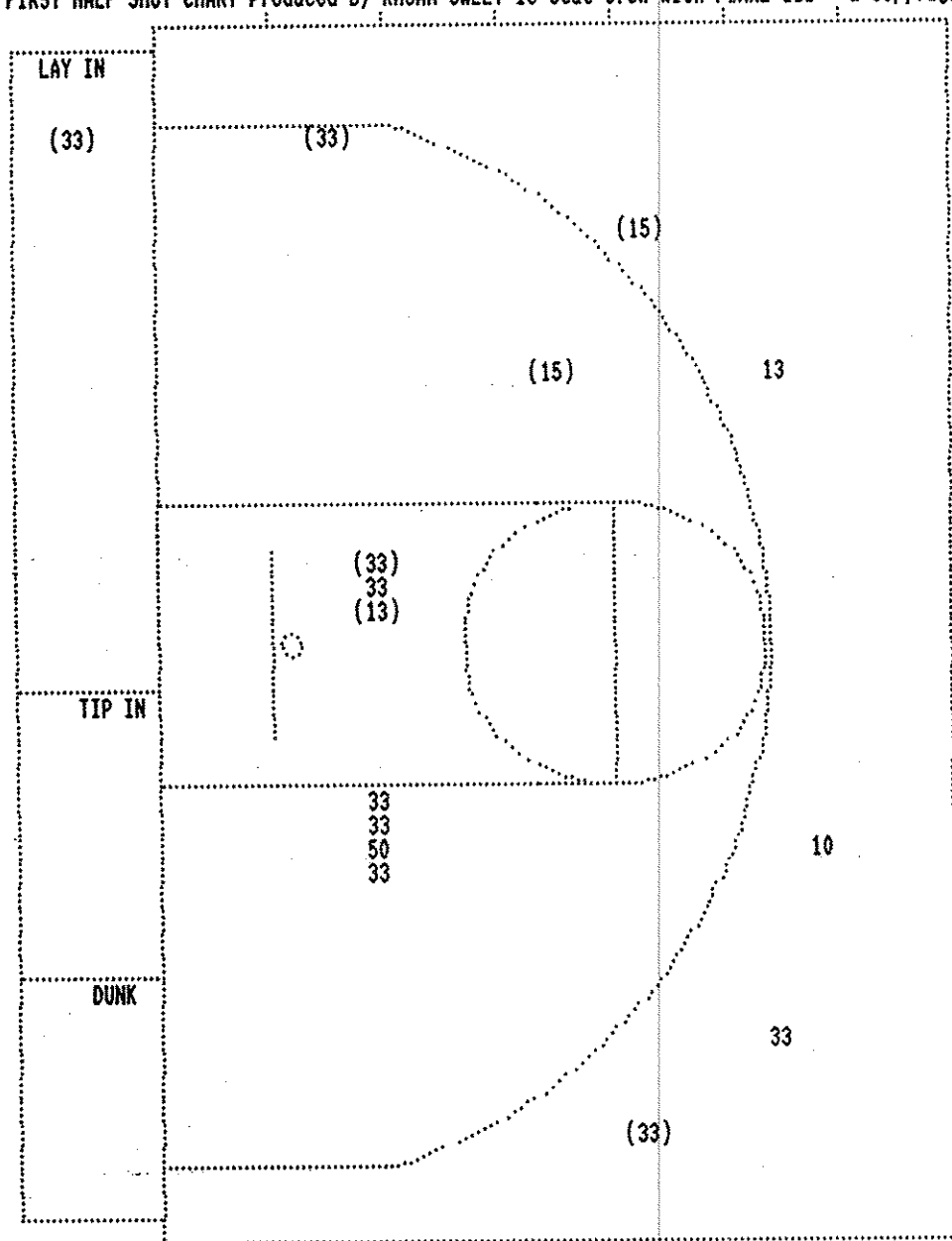
SCORE BY PERIODS

BRECKINRIDGE COUNTY	16	11	=	27
FRANKLIN COUNTY	10	10	=	20

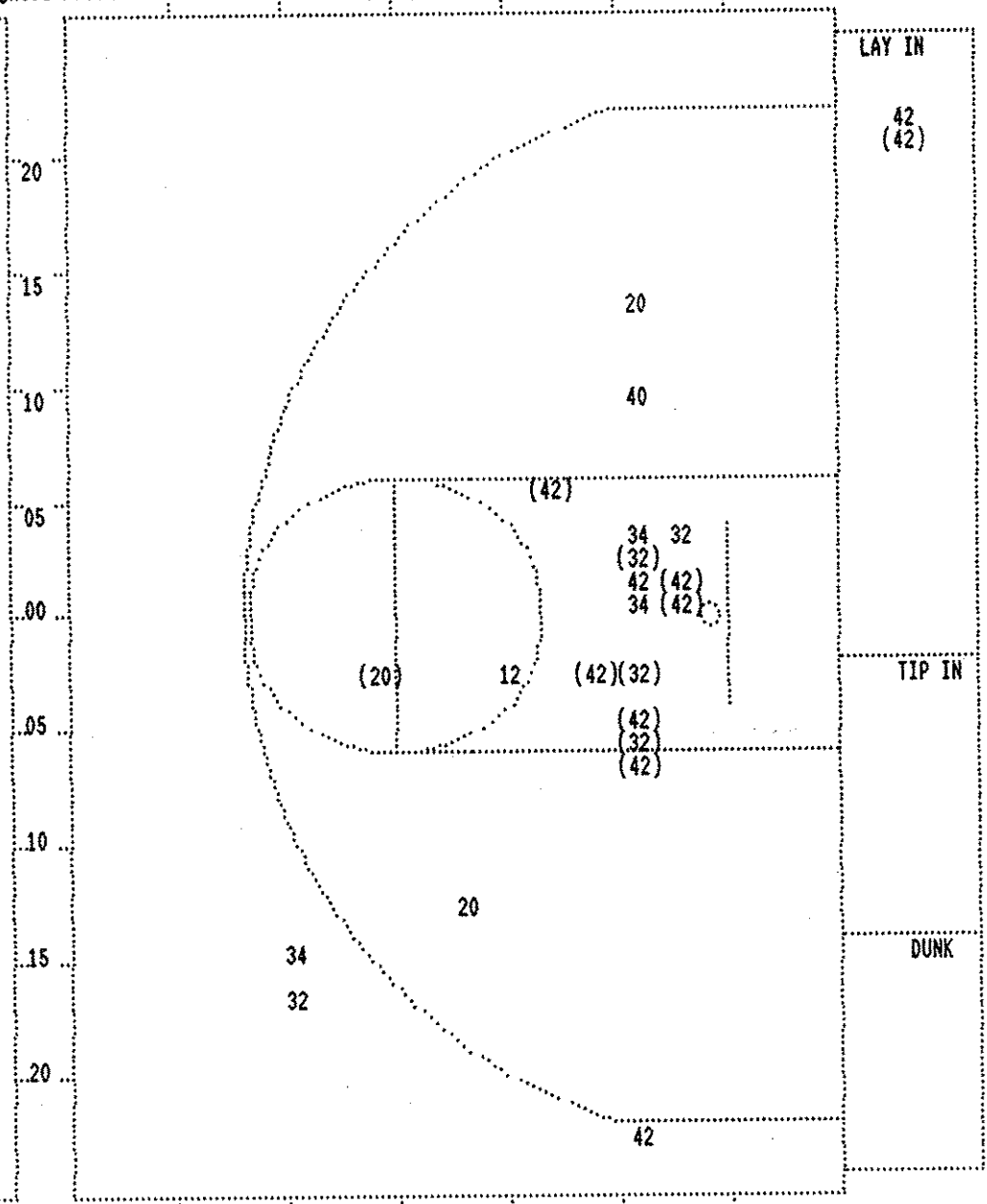
Attendance:

COMMENTS:	POINTS OFF TURNOVERS	SECOND CHANCE POINTS
BRECKINRIDGE COUNTY	4	2
FRANKLIN COUNTY	4	6

Produced by the KHSAA SWEET 16 Stat Crew with FINAL III - a Product of STONE CONSULTING (606)273-3941



FRANKLIN COUNTY					
Player	1-9 Ft	10-15 Ft	Over 15 Ft	3 Pointers	Total
33 - ROBINSON,	4 / 9	44.4%			
50 - EVANS, DAV	0 / 1	0.0%			
10 - ROBINSON,	0 / 1	0.0%			
15 - HOEHNER, S	2 / 2	100.0%			
13 - McCLAIN, J	1 / 2	50.0%			
Layups	1 / 1	2 / 7	1 / 1	3 / 6	7 / 15



BRECKINRIDGE COUNTY					
Player	1-9 Ft	10-15 Ft	Over 15 Ft	3 Pointers	Total
34 - WHITWORTH,	0 / 3	0.0%			
42 - SILLS, JAY	7 / 10	70.0%			
32 - MATTINGLY,	3 / 5	60.0%			
12 - PAYNE, BRA	0 / 1	0.0%			
20 - CRITCHELOW	1 / 3	33.3%			
Layups	1 / 2	9 / 14	1 / 3	0 / 1	0 / 3
					11 / 23

BRECKINRIDGE COUNTY "FIGHTING TIGERS" vs FRANKLIN COUNTY "FLYERS"
 2nd Half Play by Play

PAGE : 3

Tip off at 2:30 P.M. on 03/15/95 at BOY'S SWEET 16, LEXINGTON
 Produced by the KHSAA SWEET 16 Stat Crew with FINAL III
 Final III is a product of STONE CONSULTING SERVICE (606)273-3941

Player	Team	FRANKLIN COUNTY	Time	Score	BRECKINRIDGE COUNTY	Player	Team
MILLER, SHANE, ROBINSON, RONI		EVANS, DAVID, ROBINSON, DALE, HOEHNER, SAM			WHITWORTH, JARED, SILLS, JAY, MATTINGLY, ADAM, PAYNE, BRADLEY, CRITCHELOW, PAT		
5-10	50.0%	8-16 50.0%	2 ft Lane Turnaround by ROBINSON, RONI	3 7:45	20-29*	6 ft Lane Jump shot by WHITWORTH, JARED	1-4 25.0% 12-24 50.0%
1-2	50.0%	9-18 50.0%	4 ft Lane Follow by EVANS, DAVID	3 7:20	20-31*	Assist by PAYNE, BRADLEY	3 6
0-1	00.0%	3-5 60.0%	EVANS, DAVID, 1 Free Throw missed	3 6:54	*22-31	Driving Layup by WHITWORTH, JARED	2-5 40.0% 13-25 52.0%
1-1	100%	10-19 52.6%	3 pt 23 ft Left Side Jump shot by MILLER, SHANE	3 6:14	*24-31	Foul on MATTINGLY, ADAM	1 1
			Assist by RICE, DAVID	3 6:14			
			REB: 12 A: 6 BLK: 4 TO: 9 PF: 1	3 5:22			
			S: 4 FT: 3-5 60.0% FG: 10-19 52.6%	3 5:22			
6-11	54.5%	11-20 55.0%	Alley Oop Layup by ROBINSON, RONI	3 4:59	*27-31	Foul on PAYNE, BRADLEY	3 2
			Assist by ROBINSON, DALE	3 4:45			
3-4	75.0%	12-22 54.5%	3 pt 23 ft Left Side Jump shot by HOEHNER, SAM	3 4:45		REB: 14 A: 6 BLK: 1 TO: 5 PF: 2	
			Assist by ROBINSON, DALE	3 4:38		S: 3 FT: 5-6 83.3% FG: 13-28 46.4%	
			Foul on HOEHNER, SAM	3 4:27	*29-31	Foul on MATTINGLY, ADAM	2 3
			Sub In: McClAIN, JOEY Out: MILLER, SHANE	3 3:11	29-34*	3 pt 22 ft Left Angle Jump shot by PAYNE, BRADLEY	1-2 50.0% 14-29 48.2%
			REB: 12 A: 8 BLK: 4 TO: 9 PF: 2	3 2:51	*32-34	Assist by CRITCHELOW, PAT	4 7
			S: 4 FT: 3-5 60.0% FG: 12-22 54.5%	3 2:37			
7-14	50.0%	13-25 52.0%	4 ft Lane Jump shot by ROBINSON, RONI	3 2:37	32-36*	CRITCHELOW, PAT, 2 Free Throws made both	3-4 75.0% 7-8 87.5%
				3 2:28			
			No. 1 FRANKLIN COUNTY	3 2:06	32-38*	Driving Layup by CRITCHELOW, PAT	2-4 50.0% 15-30 50.0%
				3 1:51	*34-38	Foul on PAYNE, BRADLEY	4 4
				3 1:32		Sub In: MATTINGLY, MATT Out: PAYNE, BRADLEY	
				3 1:06		12 ft Left Side Jump shot by CRITCHELOW, PAT	3-5 60.0% 16-32 50.0%
				3 0:00	34-40*		

BRECKINRIDGE COUNTY "FIGHTING TIGERS" vs FRANKLIN COUNTY "FLYERS"
 2nd Half Play by Play

PAGE : 4

Tip off at 2:30 P.M. on 03/15/95 at BOY'S SWEET 16, LEXINGTON
 Produced by the KHSAA SWEET 16 Stat Crew with FINAL III
 Final III is a product of STONE CONSULTING SERVICE (606)273-3941

Player Team FRANKLIN COUNTY
 MILLER, SHANE, ROBINSON, DALE, HOEHNER, SAM, ROBINSON, RONI, EVANS, DAVID
 Ball to FLYERS

REB: 13 A: 8 BLK: 4 TO: 10 PF: 2
 S: 4 FT: 3-5 60.0% FG: 13-26 50.0%

8-15 53.3% 14-27 51.8% Driving Layup by ROBINSON, RONI
 Assist by EVANS, DAVID
 3 9
 2 3 Foul on ROBINSON, DALE
 3 4 Foul on ROBINSON, DALE

0-2 00.0% 3-6 50.0% EVANS, DAVID, 1 & Bonus missed 1st
 2 5 Foul on ROBINSON, RONI

2-3 66.6% 15-28 53.5% 3 pt 23 ft Left Angle Jump shot by MILLER, SHANE
 5 10 Assist by ROBINSON, DALE
 2 6 Foul on HOEHNER, SAM
 4 7 Foul on ROBINSON, DALE

2-4 50.0% 5-8 62.5% EVANS, DAVID, 2 Free Throws made both
 2-3 66.6% 16-30 53.3% 4 ft Lane Turnaround by EVANS, DAVID
 1 11 Assist by MILLER, SHANE

4-6 66.6% 7-10 70.0% EVANS, DAVID, 2 Free Throws made both

REB: 15 A: 11 BLK: 4 TO: 12 PF: 7
 S: 5 FT: 7-10 70.0% FG: 16-30 53.3%

REB: 15 A: 11 BLK: 4 TO: 12 PF: 7
 S: 5 FT: 7-10 70.0% FG: 16-30 53.3%

3 8 Foul on ROBINSON, RONI
 4 9 Foul on ROBINSON, RONI

3-5 60.0% 17-34 50.0% 4 ft Lane Follow by EVANS, DAVID
 3 10 Foul on HOEHNER, SAM

9-17 52.9% 18-35 51.4% Jump shot Layup by ROBINSON, RONI
 4 11 Foul on HOEHNER, SAM

4-6 66.6% 19-36 52.7% Layup Off Fast Break by EVANS, DAVID

Time Score BRECKINRIDGE COUNTY Player Team

CRITCHELOW, PAT, MATTINGLY, ADAM, SILLS, JAY, MATTINGLY, MATT, WHITWORTH, JARED

4 7:49 Foul on CRITCHELOW, PAT 2 5
 4 7:33 34-42* 16 ft Right Angle Jump shot by SILLS, JAY 8-14 57.1% 17-33 51.5%

4 7:33 REB: 18 A: 7 BLK: 1 TO: 7 PF: 5
 No. 2 FRANKLIN COUNTY TIME - O U T S: 4 FT: 7-8 87.5% FG: 17-33 51.5%

4 7:18 *36-42

4 6:36
 4 6:25
 4 6:05 Foul on SILLS, JAY 3 6
 4 6:05 Sub In: PAYNE, BRADLEY Out: MATTINGLY, MATT
 4 6:01 Foul on SILLS, JAY 4 7
 4 6:01 Sub In: MATTINGLY, MATT Out: SILLS, JAY

4 6:01
 4 6:01
 4 5:49 *39-42

4 5:39
 4 5:39 Sub In: SILLS, JAY Out: MATTINGLY, MATT
 4 5:36

4 5:36 39-44* CRITCHELOW, PAT, 1 & Bonus made both 5-6 83.3% 9-10 90.0%
 4 5:01 39-46* Jump shot Layup by MATTINGLY, ADAM 4-6 66.6% 18-34 52.9%
 Assist by CRITCHELOW, PAT 5 8
 4 4:47 Foul on WHITWORTH, JARED 1 8

4 4:47 *41-46
 4 4:40 41-48* Layup Off Fast Break by SILLS, JAY 9-15 60.0% 19-35 54.2%
 4 4:08 *43-48

4 3:26 43-50* 3 ft Lane Turnaround by SILLS, JAY 10-16 62.5% 20-37 54.0%
 Assist by CRITCHELOW, PAT 6 9
 4 2:49 Foul on PAYNE, BRADLEY 5 9
 4 2:49 Sub In: MATTINGLY, MATT Out: PAYNE, BRADLEY

4 2:49 *45-50

4 2:46 REB: 19 A: 9 BLK: 1 TO: 9 PF: 9
 TIME - O U T BRECKINRIDGE COUNTY No. 2 S: 5 FT: 9-10 90.0% FG: 20-37 54.0%

4 2:46 REB: 19 A: 9 BLK: 1 TO: 9 PF: 9
 TIME - O U T BRECKINRIDGE COUNTY No. 3 S: 5 FT: 9-10 90.0% FG: 20-37 54.0%

4 2:41
 4 2:41 45-52* CRITCHELOW, PAT, 1 & Bonus made both 7-8 87.5% 11-12 91.6%
 4 2:10

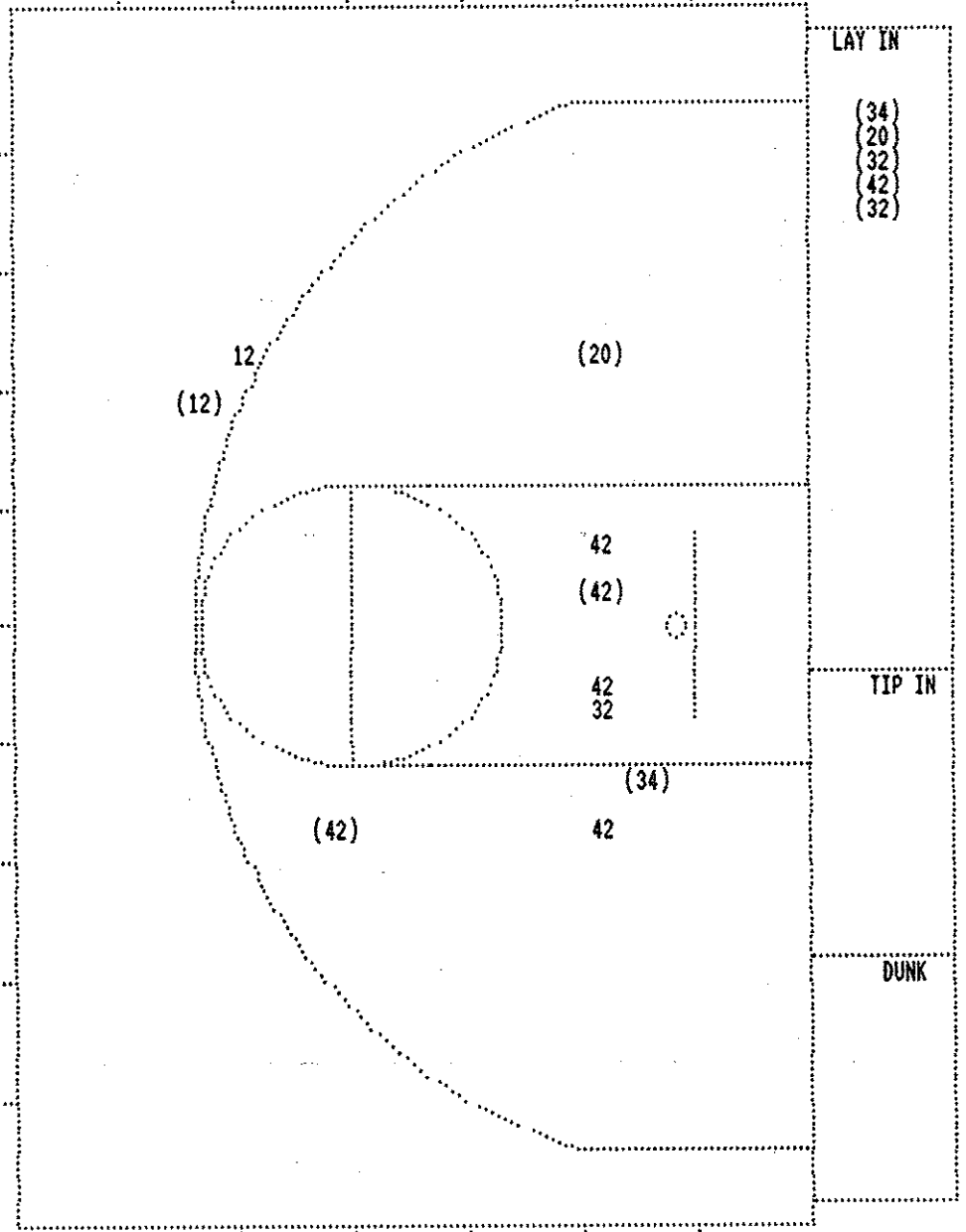
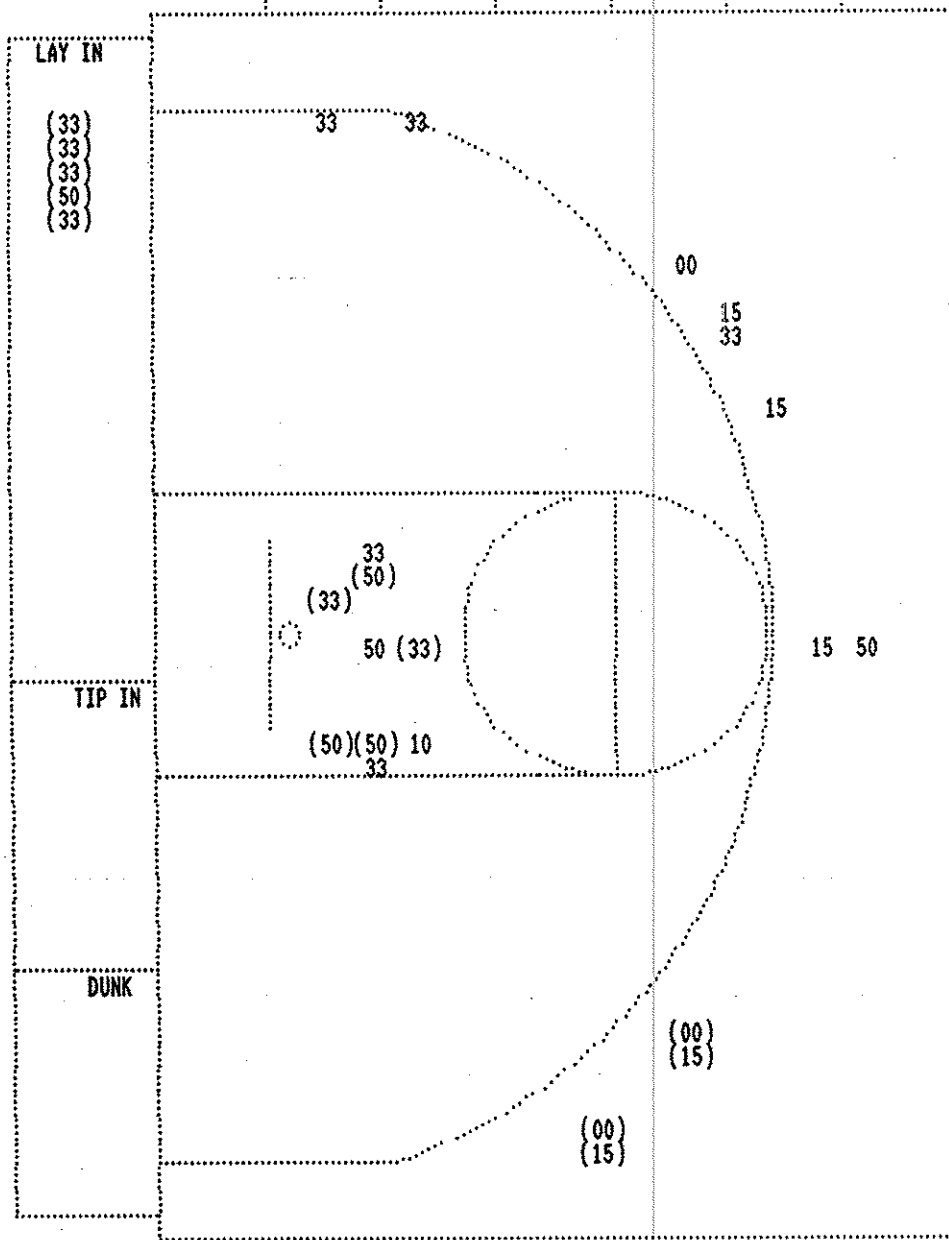
4 2:10 45-53* CRITCHELOW, PAT, 1 & Bonus made 1st missed 2nd 8-10 80.0% 12-14 85.7%
 4 1:47 *47-53

4 1:40
 4 1:40 47-55* SILLS, JAY, 1 & Bonus made both 4-4 100% 14-16 87.5%
 4 1:32 *49-55

4 1:27
 4 1:27 49-57* SILLS, JAY, 1 & Bonus made both 6-6 100% 16-18 88.8%
 4 1:15 *51-57

4 1:08 51-59* Layup Off Fast Break by MATTINGLY, ADAM 5-8 62.5% 21-38 55.2%
 Assist by CRITCHELOW, PAT 7 10

Player		Team		FRANKLIN COUNTY		Time	Score	BRECKINRIDGE COUNTY		Player	Team	
4-7	57.1%	20-37	54.0%	3 pt	23 ft Left Angle Jump shot by	HOEHNER, SAM	4 0:55	*54-59				
6		12			Assist by ROBINSON, DALE							
					REB: 18 A: 12 BLK: 4 TO: 13 PF: 11		4 0:54		REB: 20 A: 10 BLK: 1 TO: 10 PF: 9			
					S: 6 FT: 7-10 70.0% FG: 20-37 54.0%	No. 3 FRANKLIN COUNTY	T I M E - O U T		S: 5 FT: 16-18 88.8% FG: 21-38 55.2%			
					REB: 18 A: 12 BLK: 4 TO: 13 PF: 11		4 0:53		REB: 20 A: 10 BLK: 1 TO: 10 PF: 9			
					S: 6 FT: 7-10 70.0% FG: 20-37 54.0%	T I M E - O U T	BRECKINRIDGE COUNTY No. 4		S: 5 FT: 16-18 88.8% FG: 21-38 55.2%			
10-18	55.5%	21-38	55.2%	Layup Off Fast Break by	ROBINSON, RONI		4 0:39	*56-59				
7		13		Assist by	ROBINSON, DALE		4 0:30					
2		12		Foul on	MILLER, SHANE		4 0:30	56-61* CRITCHELOW, PAT, 2 Shot Intentional made both	10-12	83.3%	18-20 90.0%	
				Foul on	HOEHNER, SAM		4 0:16					
5		13		Sub In:	McCLAIN, JOEY Out: HOEHNER, SAM		4 0:16					
				Foul on	ROBINSON, RONI		4 0:16	56-62* CRITCHELOW, PAT, 1 & Bonus made 1st missed 2nd	11-14	78.5%	19-22 86.3%	
				Sub In:	MEFFORD, BRENT Out: ROBINSON, RONI		4 0:06					
							4 0:06		MATTINGLY, MATT, 1 & Bonus missed 1st	0-1	00.0%	19-23 82.6%
							4 0:06					
4-7	57.1%	21-41	51.2%	3 pt	24 ft Straight Away Jump shot by	EVANS, DAVID, missed	4 0:00					
							4 0:00	Rebound by CRITCHELOW, PAT	D-1	Tot-1	D-1 Tot-23	



FRANKLIN COUNTY			
Player		Player	
00 - MILLER, SH	2 / 3	66.6%	
33 - ROBINSON,	6 / 11	54.5%	
50 - EVANS, DAV	4 / 6	66.6%	
10 - ROBINSON,	0 / 1	0.0%	
15 - HOEHNER, S	2 / 5	40.0%	
Layups	1-9 Ft	10-15 Ft	Over 15 Ft 3 Pointers Total
5 / 5	5 / 9	4 / 12	14 / 26
100.0%	55.6%	33.3%	53.8%

BRECKINRIDGE COUNTY					
Player		Player		Player	
34 - WHITWORTH,	2 / 2	100.0%			
42 - SILLS, JAY	3 / 6	50.0%			
32 - MATTINGLY,	2 / 3	66.6%			
12 - PAYNE, BRA	1 / 2	50.0%			
20 - CRITCHELOW	2 / 2	100.0%			
Layups	1-9 Ft	10-15 Ft	Over 15 Ft 3 Pointers Total		
5 / 5	2 / 6	1 / 1	1 / 1	1 / 2	10 / 15
100.0%	33.3%	100.0%	100.0%	50.0%	66.7%